

desco drill rig

Desco Inc.(HQ/Manufacturer)
HEAD OFFICE: 1240-1, Ok-Dong, Gwangsan, Gwangju, Korea
TEL : 82.62.952.4564 / FAX : 82.62.953.1593

EXPORT DIVISION
2607 jidong, Lottecastle, 76, Soongin-Dong, Jongno-Gu, Seoul, Korea
TEL : 82-2-3670 6400 / FAX : 82-2-3670 6399
E-mail : desco@desco-inc.com

SP7500S

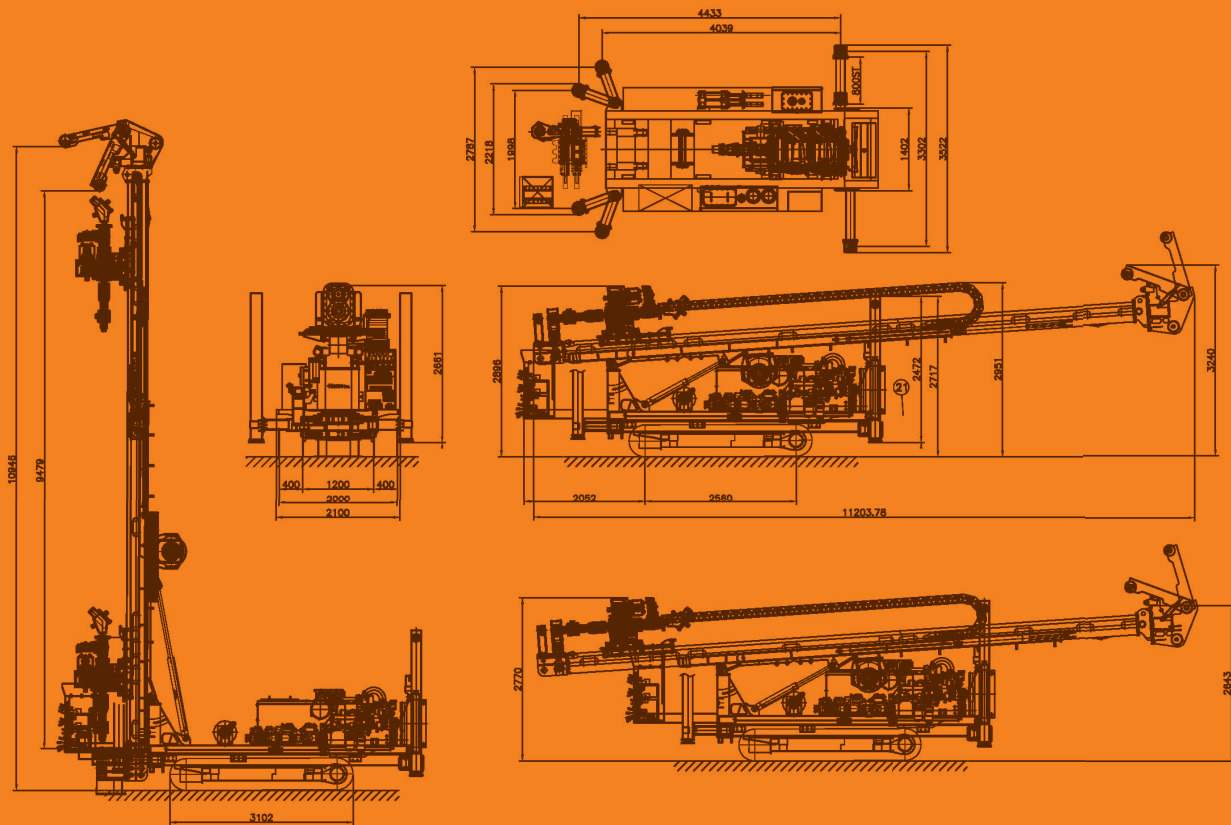
Deep Exploration Drilling Equipment



SP7500S (Deep exploration diamond drilling)

As one of the most standard drills upto PQ-900M depth for exploration diamond drilling, SP7500S surface coring drill is an advanced addition to the SP-S series featuring a telescopic and dump mast. SP7500S is capable of both wireline and conventional coring, as well as DTH, rotary drilling methods with pullback capacity of 30 ton and a torque can be increased. Compactable size enables drillers to easily operate & manage in working place. SP7500S can also include an advanced rod management system that ensures safe and efficient operation. A radio remote safely positions the driller away from the rig during traveling.

- * SP7500S for exploration diamond drilling
- * Design for drilling up to PQ900M
- * Diamond drilling methods (Main)
- * Wireline system
- * Percussion & rotary drilling methods (Additional)
- * Vertical, Angle Drilling (45 degree - 90 degree) capability
- * Foot clamping system
- * All instrument & control levers are concentrated.
- * Mounted full package on drill rig
- * Self-loading system
- * Installed major hyd. Parts so easy to find spare parts in the market
- * Options - inverter, auto rod changer, pre-heating system, wireless remote control and so on



If you want the kind of drill rigs,
DESCO INC. is at your solution and service.



TECHNICAL SPECIFICATION

Top head rotation

Rotation torque	One motor (std) with 4 stage 750kg.M / 340kg.M / 210kg.M / 120kg.M
Rotation speed	0 ~ 200rpm (low) / 200 ~ 400rpm / 400 ~ 700rpm/700 ~ 1250rpm (high)
Rotation speed & torque can be controlled	

Feed System

Feed system type	Variable Speed Hydraulic Cylinder
Feed hydraulic cylinder	160mm*110mm*3750mm
Feed stroke	7.5M (Drill Pipe - Max. 6.0M)
Pull-back force	30ton
Down force	14ton

Dimension & Weight

Net weight	17.5ton
Width	2.3M
Length (mast folded / unfolded)	10.5M
Height (mast folded / unfolded)	3.2M

Engine

Engine model	Hyundai D6AZ
Engine power	270HP@1800rpm
Cooling system	Water
Fuel tank	300 Liters
Electrical system	24V DC

Hydraulic system

General	Single variable displacement pump, pressure & flow controlled
Pump model	K3V140*2+63*2 (4 pumps)
System hyd. oil flow	550 LPM
Hydraulic tank	400 Liters
Operating pressure	280 Bar

Working table & hyd. clmap

Foot clamping system	
Max. diameter	8"
Hyd clamp	8"

Outrigger

Four hyd. Jacks & outriggers - Front jacks & outriggers (swing 45°)	
Ground clearance	800mm
Width	3000mm

Crawler base

Doosan model (Steel)

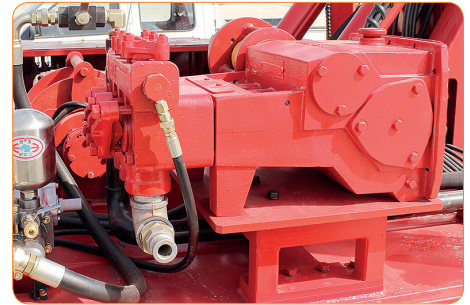
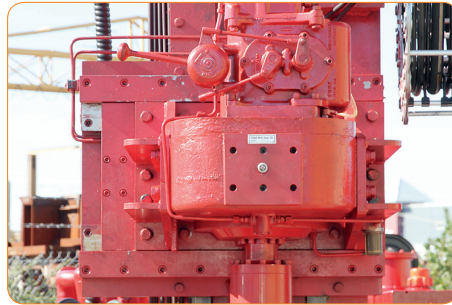
Main hoist

Hoist type	Variable speed planetary c/w brake
Linepull capacity	10 ton
Spool capacity	14mm * 30M
Wire line	Drum for 1800M * Dia 6mm (1200kg)

Mud pump

Hydraulic cylinder operated duplex piston pump	
Capacity	300 LPM
Max. pressure	40 bar

If you want the kind of drill rigs, DESCO INC. is at your solution and service.



STANDARD / OPTIONAL

	STANDARD	OPTIONAL	OPTIONAL REQUEST
Drill head			
Drill head	DSDH-950F		
Drill head - sliding	0		
Feed system			
Mast slide (dump up and down)	0		
Bolted mast foot	0		
Control panel	0		
Hydraulic system			
Auxiliary hydraulic ports		0	
Hydraulic breakout table			
Max. diameter	max. 8"	over 8"	
Single clamp		0	
Double clamp	0		
Crawler base			
Steel track	0		
Steel track with rubber pad		0	
Main hoist			
Main winch	max. 10ton	over 10ton	
Jib with winch		0	
Wireline	0		
Mud pump			
Capacity	300LPM		
Design for angle drilling		0	
Foot clamping system	0		
Water injection pump	0		
Triplex mud pump		0	
DTH oil lubricator		0	
Auto rod changer		0	
Preheating system		0	
Wireless remote travel		0	
Safety cage		0	

Notice As your optional list, engine, hyd. system, crawler and so on can be changed and design of drill rigs can be changed.

Specifications are general and subject to change without notice. Due to selected options, delivered equipment may not necessarily match that shown.

